

StarLine®

The Quality Line in Health Care

Welcome

to the StarLine catalog for the new millennium and beyond. Your StarLine Distributor has made a large investment to create a comprehensive listing of products that are available to you, our valuable customer.

Your StarLine Distributor is a company dedicated to high levels of service and satisfaction. They are independently owned and service local, regional, national and international customers.

You will see the StarLine Brand of products featured throughout this catalog. These products are designed expressly for the healthcare professional. StarLine Brand products are sold exclusively through your StarLine Distributor. Samples are always available for your evaluation.

Most, if not all, of the products described in this catalog are available through your StarLine Distributor. Manufacturers do reserve the right to sell through their respective authorized distributors. Your StarLine Distributor can advise you if there are any products, which they cannot supply.

We sincerely hope you find whatever you need in this catalog. However, we do request that you contact your StarLine Distributor shown on the front cover for more detailed information. They may be able to show you similar products that may closer fulfill your specific needs.

Special thanks are extended to the manufacturers listed in this catalog. We appreciate their willingness to supply us with the appropriate information concerning their equipment and supplies.

Thank you for your interest and purchases. We appreciate your business.

Sincerely,
The StarLine Dealers Association

The StarLine Dealers Association is a voluntary membership organization of independently owned medical supply distributors. StarLine Distributor locations are located throughout the United States, Canada, Central and South America.

INTRODUCTORY INFORMATION

We are pleased to provide this catalog to our member-dealers for the convenience of their customers. Please note the following when using this catalog.

1. While most standard items found in our National Distribution Center Warehouse are featured, some available items may not be listed. Please contact your StarLine representative to assist you in finding what you need.
2. During the three-year shelf life of this catalog, certain products and lines will be deleted and new merchandise will be added. Please feel free to contact your StarLine representative about the availability of any item.
3. Authorized distributors vary geographically. Therefore, in some instances, our member distributor may not represent a specific manufacturer represented in this catalog.
4. We have done our best to match the catalog numbers and photos together. However, some photos shown may represent an item with accessories or additional parts.
Please consult your StarLine Distributor about specific products before purchasing based on a photograph.

TERMS

Regular terms of sale are extended by our member distributors to most customers with favorable credit. Long term financing can be arranged. Please ask your StarLine distributor representative for details.

GUARANTEE

The products we have represented in this catalog have been carefully chosen from reputable, well known manufacturers. In addition to their standard guarantee, the StarLine name should assure your complete satisfaction. We have serviced physicians' offices, hospitals, nursing homes and clinics with our carefully chosen products for over 15 years.

SHIPPING

Purchases normally will be shipped the most economical way possible unless your order specifies the type or carrier desired (parcel post, express freight or other). Should damage or shortage occur, please notify your StarLine member distributor representative immediately so that they can initiate the proper adjustment procedure.

PRICES

Prices quoted in this catalog either represent reasonably current manufacturer's suggested retail prices at the time of printing, or are believed by us to be generally representative of pricing by our member-distributors at the time of printing. Taxes and shipping are not included in the listings. The current price of any particular item may differ from the price quoted in the catalog due to our member-distributor's pricing policies, periodic cost adjustments and competitive factors existing in our member-distributor's market. **Therefore, the prices quoted in this catalog should be used as a guide by you rather than a firm quotation. Upon request, our member-distributors will be pleased to quote current pricing.**

EXAM TABLE PAPER

StarLine Table Papers provide gentle patient comfort, yet are durable enough to protect the exam table from moisture, soil or other damage. Available in sturdy Smooth or quiet, more absorbent Crepe.

CODE	DESCRIPTION	COLOR	SIZE	CASE
151003	Smooth, Standard	White	18" x 225"	12
151007	Smooth, Standard	White	21" x 225"	12
151013	Crepe, Standard	White	18" x 125"	12
151017	Crepe, Standard	White	21" x 125"	12
122062	Smooth, Economy	White	18" x 225"	12
122064	Smooth, Economy	White	21" x 225"	12
122072	Crepe, Economy	White	18" x 125"	12
122074	Crepe, Economy	White	21" x 125"	12

GOWNS

Our gowns provide knee length coverage for patient comfort, hygiene and modesty. The tissue/poly/tissue construction places a layer of film between two layers of absorbent tissue for added strength during extended exams. The 3 ply tissue construction is highly absorbent and economical for shorter procedures.

CODE	DESCRIPTION	COLOR	SIZE	CASE
1510520	Tissue/Poly/Tissue	Blue	30" x 42"	50
1510536	Tissue/Poly/Tissue	Mauve	30" x 42"	50
1510320	3 Ply Tissue	White	30" x 42"	50

StarLine[®]

STARLINE is a trademark of National Distribution & Contracting, Inc. FABRICEL is a trademark of Banta Healthcare Group, Ltd. and is used with permission.

PROFESSIONAL TOWELS

These absorbent 3 ply tissue towels may be used to wash, wipe or drape in situations where absorbency and strength are necessary.

CODE	DESCRIPTION	COLOR	SIZE	CASE
1510101	3 Ply Tissue	White	13" x 18"	500

CAPES

Available in tissue/poly/tissue construction for added strength, or highly absorbent 3 ply tissue.

CODE	DESCRIPTION	COLOR	SIZE	CASE
1510515	Tissue/Poly/Tissue	Blue	30" x 21"	100
1510516	Tissue/Poly/Tissue	Mauve	30" x 21"	100
1510315	3 Ply Tissue	White	30" x 21"	100

DRAPE SHEETS

Durable, full sheet construction provides patient with lightweight comfort. Available in 2 ply all tissue, white or mauve.

CODE	DESCRIPTION	COLOR	SIZE	CASE
1510302	2 Ply Tissue	White	40" x 48"	100
1510316	2 Ply Tissue	Mauve	40" x 48"	100
1510303	2 Ply Tissue	White	40" x 60"	100

**Don't see what
you are looking for?**

**Call your representative
for additional
product answers.**

StarLine®

The Quality Line in Health Care



STARLINE MEDICAL PENLIGHTS

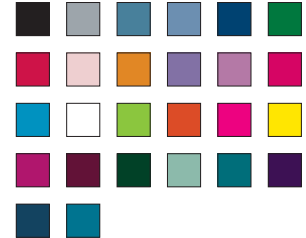
Penlight with pupil gauge has high-intensity prefocused bulb powered by two AAA batteries. Aluminum contact strip assures good contact for brighter light. Extruded case has a unique V-clip. 1-year shelf life. Useful life is 3- to 6-months with intermittent use.
6666S Medical Penlights, 6/pk



STARLINE SINGLE HEAD NURSE STETHOSCOPES

Diaphragm only aluminum chestpiece. Adjustable chrome-plated binaurals. Flexible 22" PVC "Y" tubing. White plastic eartips. Overall length 31". Latex free.

- 104266030 Black
- 104266031 Gray
- 104266033 Light Blue
- 104266035 Royal Blue
- 104266036 Aqua Blue
- 104266037 Green
- 104266038 Light Green
- 104266039 Red
- 104266040 Pink
- 104266041 Peach
- 104266042 Gold
- 104266044 Lavender
- 104266045 Orchid
- 104266046 Magenta
- 104266047 Yellow
- 104266048 Brown
- 104266049 White
- 104266050 Neon Blue
- 104266051 Neon Green
- 104266052 Neon Orange
- 104266053 Neon Pink
- 104266054 Neon Yellow
- 104266055 Boysenberry
- 104266056 Burgundy
- 104266057 Dark Green
- 104266058 Mint
- 104266059 Teal
- 104266060 Purple
- 104266061 Navy
- 104266063 Turquoise



STARLINE SPRAGUE RAPPAPORT STETHOSCOPES

Threaded chestpiece drum of chrome plated zinc permits the use of five interchangeable chestpiece fittings. 22" tubing length; overall length 30". Latex free, double tube configuration for improved acoustic separation. Proprietary valve mechanism eliminates acoustic leakage. Adjustable chrome plated brass binaurals. Complete with an accessory pouch containing the bell chestpieces, chestpiece key, 2 spare diaphragms, one pair of mushroom eartips and one pair of silicon eartips. Weighs 7.5 oz. Inspected and packaged in the U.S.A. Five year warranty.

- | | | | |
|-----------|------------|-----------|-------------|
| 104264130 | Black | 104264150 | Neon Blue |
| 104264131 | Gray | 104264151 | Neon Green |
| 104264133 | Light Blue | 104264152 | Neon Orange |
| 104264134 | Peacock | 104264153 | Neon Pink |
| 104264135 | Royal Blue | 104264154 | Neon Yellow |
| 104264137 | Green | 104264155 | Boysenberry |
| 104264139 | Red | 104264156 | Burgundy |
| 104264140 | Pink | 104264157 | Dark Green |
| 04264142 | Gold | 104264158 | Mint |
| 104264144 | Lavender | 104264159 | Teal |
| 104264145 | Orchid | 104264160 | Purple |
| 104264146 | Magenta | 104264161 | Navy |
| 104264149 | White | 104264163 | Turquoise |



1010A804

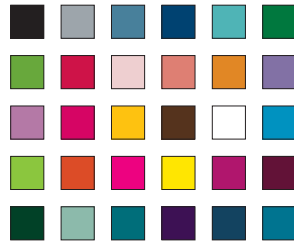


1010A806

STARLINE DISPOSABLE ACTIVE ELECTRODES - DERMAL TIPS

Can be used with most electrosurgical generators that use 3/32" electrodes.

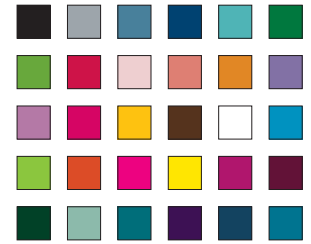
- 1010A804 Sharp Tip, Non-Sterile, 100/bx
- 1010A805 Sharp Tip, Sterile, 50/bx
- 1010A806 Blunt Tip, Non-Sterile, 100/bx
- 1010A807 Blunt Tip, Sterile, 50/bx



STARLINE PEDIATRIC STETHOSCOPES

Pediatric sized, combination diaphragm/bell chestpiece for wide frequency response. 1 1/4" diaphragm/bell equipped with non-chill ring for patient comfort. Lightweight aluminum brass construction. Adjustable chrome-plated binaurals. Flexible 22" PVC "Y" tubing. White plastic eartips. Overall length 31 1/2". Latex free.

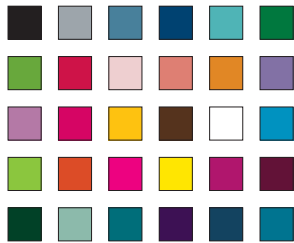
104267530	Black	104267548	Brown
104267531	Gray	104267549	White
104267533	Light Blue	104267550	Neon Blue
104267535	Royal Blue	104267551	Neon Green
104267536	Aqua Blue	104267552	Neon Orange
104267537	Green	104267553	Neon Pink
104267538	Light Green	104267554	Neon Yellow
104267539	Red	104267555	Boysenberry
104267540	Pink	104267556	Burgundy
104267541	Peach	104267557	Dark Green
104267542	Gold	104267558	Mint
104267544	Lavender	104267559	Teal
104267545	Orchid	104267560	Purple
104267546	Magenta	104267561	Navy
104267547	Yellow	104267563	Turquoise



STARLINE DUAL-HEAD STETHOSCOPES

Combination diaphragm/bell chestpiece for wide frequency response. Bell and diaphragm equipped with non-chill ring for patient comfort. Lightweight, durable construction. Adjustable metal binaurals. Flexible 22" PVC tubing. Plastic eartips. Overall length 31 1/2". Latex free.

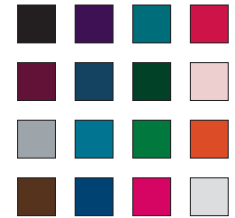
104267030	Black	104267048	Brown
104267031	Gray	104267049	White
104267033	Light Blue	104267050	Neon Blue
104267035	Royal Blue	104267051	Neon Green
104267036	Aqua Blue	104267052	Neon Orange
104267037	Green	104267053	Neon Pink
104267038	Light Green	104267054	Neon Yellow
104267039	Red	104267055	Boysenberry
104267040	Pink	104267056	Burgundy
104267041	Peach	104267057	Dark Green
104267042	Gold	104267058	Mint
104267044	Lavender	104267059	Teal
104267045	Orchid	104267060	Purple
104267046	Magenta	104267061	Navy
104267047	Yellow	104267063	Turquoise



STARLINE INFANT STETHOSCOPES

Infant sized, combination diaphragm/bell chestpiece for wide frequency response. 25mm diaphragm/bell equipped with non-chill ring for patient comfort. Chrome-plated brass chestpiece. Adjustable chrome-plated binaurals. Flexible 22" PVC "Y" tubing. White plastic eartips. Overall length 31". Latex free.

104267630	Black
104267631	Gray
104267633	Light Blue
104267635	Royal Blue
104267636	Aqua Blue
104267637	Green
104267638	Light Green
104267639	Red
104267640	Pink
104267641	Peach
104267642	Gold
104267644	Lavender
104267645	Orchid
104267646	Magenta
104267647	Yellow
104267648	Brown
104267649	White
104267650	Neon Blue
104267651	Neon Green
104267652	Neon Orange
104267653	Neon Pink
104267654	Neon Yellow
104267655	Boysenberry
104267656	Burgundy
104267657	Dark Green
104267658	Mint
104267659	Teal
104267660	Purple
104267661	Navy
104267663	Turquoise



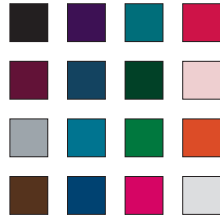
STARLINE POCKET ANEROID SPHYGMOMANOMETER

This is our "standard" sphygmomanometer. Features are the same as the premier aneroid series, except for a standard bulb/valve and bladder combination.

104276616	Thigh, Black, Latex
104276612	Newborn, Black, Latex
104276613	Infant, Black, Latex
104276614	Child, Black, Latex
104276615	Large Adult, Black, Latex
104276611	Adult, Black, Latex
104276311	Adult, Gray, Latex
104276481	Adult, Brown, Latex
104276371	Adult, Green, Latex
104276391	Adult, Red, Latex
104276431	Adult, Orange, Latex
104276351	Adult, Royal Blue, Latex
104276401	Adult, Pink, Latex
104276461	Adult, Magenta, Latex
104276591	Adult, Teal, Latex
104276601	Adult, Purple, Latex
104276561	Adult, Burgundy, Latex
104246571	Adult, Dark Green, Latex
104276621	Adult, Silver, Latex
104276631	Adult, Turquoise, Latex
30940	Adult, Navy, Latex

Latex Free

30943	Large Adult, Black, Latex Free
30941	Adult, Black, Latex Free
30942	Child, Black, Latex Free



STARLINE PREMIUM ANEROID SPHYGMOMANOMETER

This is our "premier" sphygmomanometer. Features #10428000 lifetime warranted gauge and top quality inflation system, including a nylon velcro cuff and highest quality bulb and valve. Complete with leatherette case.

- 104272612 Newborn, Black
- 104272613 Infant, Black
- 104272614 Child, Black
- 104272615 Large Adult, Black
- 104272616 Thigh, Black
- 10428000 Gauge Only, Latex Free
- 104272311 Adult, Gray
- 104272351 Adult, Royal Blue
- 104272371 Adult, Green
- 104272391 Adult, Red
- 104272401 Adult, Pink
- 104272431 Adult, Orange
- 104272621 Adult, Silver
- 104272481 Adult, Brown
- 104272591 Adult, Teal
- 104272601 Adult, Purple
- 104272611 Adult, Black
- 104272561 Adult, Burgundy
- 104272571 Adult, Dark Green
- 104272461 Adult, Magenta
- 30740 Adult, Navy
- 30742 Child, Black, Latex Free
- 30741 Adult, Black, Latex Free
- 30743 Large Adult, Black, Latex Free
- 104272631 Adult, Turquoise



STARLINE ANEROID SPHYGMOMANOMETER

Black enamel 300mmHg no-pin stop manometer. Gray cotton cuff with artery label and gauge holder. Latex inflation bladder and bulb. Chrome plated deflation valve. Complete with leatherette zippered carrying case and operating instructions.

Assembled, inspected and packaged in the U.S.A. Ten-year calibration warranty.
104277311 Adult, Gray

STARLINE CUFFS & BLADDERS

For use with most aneroid or mercurial blood pressure instruments. Individually boxed.

- 104284610 Adult, 2-Tube, Black
- 104285610 Adult, 1-Tube, Black
- 30840 Adult, 2-Tube, Black, Latex Free
- 30850 Adult, 1-Tube, Black, Latex Free

STARLINE CALIBRATED NYLON CUFF

Featuring the marking system. For use with most aneroid or mercurial blood pressure instruments. Two-year warranty.

- 104283610 Adult, Black, Latex

STARLINE INFLATION SYSTEM

Includes nylon cuff, deluxe 2-tube bladder, bulb and valve. For use with most aneroid or mercurial blood pressure instruments. Individually boxed.

- 104286610 Adult, Black, Latex
- 30860 Adult, Black, Latex Free



STARLINE SPHYG/SPRAGUE KIT

Black enamel 300mmHg no-pin stop manometer. Color matched sprague-type stethoscope. Calibrated nylon cuff. Latex bladder and bulb. Chrome plated valve. Color matched nylon carrying case that is extra large with one large zippered compartment, outside Velcro® pocket, end strap and handy key ring. Case measures 10" x 6" x 3". Assembled, inspected and packaged in the U.S.A. Two-year inflation system warranty. 20 year calibration warranty.

- 30762 Burgundy
- 30761 Black
- 30763 Dark Green
- 30764 Magenta
- 30765 Silver
- 30766 Teal
- 30767 Purple



STARLINE DIGITAL THERMOMETER

Accurately records body temperature in 60 seconds. Liquid crystal display readout displays temperature within 1/10th of a degree. Audible beep signals peak temperature. A replaceable battery provides 200 hours of use. Each package comes complete with thermometer, 5 probe covers, battery, storage case, instructions, and one year limited warranty. Can be used orally, rectally or under the arm. Latex free.
10420410 Digital Thermometer w/beeper



STARLINE THERMOMETER SHEATHS

Manufactured to extraordinary tolerances from the finest materials available. Sheaths can be twisted or peeled off of the thermometer.

- 1045-D1 Digital Type, 100/bx, 50 bx/cs
- 1045-D2 Digital Type, 500/bx, 10 bx/cs
- 1045-1 Glass Type, 100/bx, 50 bx/cs



STARLINE WHITE EXAMINATION TABLE PAPER

Smooth finish offers strong, clean protection from moisture. Crepe finish is warm, quiet and comfortable for patient. Both styles have substantial wet strength and cling to table surfaces.

- 151013 Crepe, 18" x 125 ft, 12/cs
- 151017 Crepe, 21" x 125 ft, 12/cs
- 151003 Smooth, 18" x 225 ft, 12/cs
- 151007 Smooth, 21" x 225 ft, 12/cs

STARLINE ECONOMY EXAMINATION TABLE PAPER

Quality, low cost alternative. White.

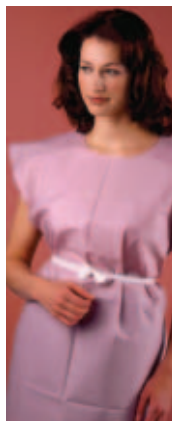
- 122062 Smooth, 18" x 225 ft, 12/cs
- 122064 Smooth, 21" x 225 ft, 12/cs
- 122072 Crepe, 18" x 125 ft, 12/cs
- 122074 Crepe, 21" x 125 ft, 12/cs



STARLINE EXAMINATION DRAPE SHEETS

Made of soft tissue embossed for strength and durability. Lengths for both partial draping or more complete draping procedures.

- 1510302 2 Ply, White, 40" x 48", 100/cs
- 1510303 2 Ply, White, 40" x 60", 100/cs
- 1510316 2 Ply, Mauve, 40" x 48", 100/cs



STARLINE EXAMINATION GOWNS

3-ply tissue gown ideal for shorter use procedures. TPT gowns provide added strength for extended exams. Gowns feature front/back openings and attached waist ties.

- 1510320 3 Ply Tissue, White, 50/cs
- 1510520 Tissue/Poly/Tissue, Blue, 50/cs
- 1510536 Tissue/Poly/Tissue, Mauve, 50/cs



STARLINE EXAMINATION CAPES

3-ply tissue capes feature embossed patterns for softness. TPT capes offer comfort and strength. Front/back openings. 30" x 21".

- 1510315 3 Ply Tissue, White, 100/cs
- 1510515 Tissue/Poly/Tissue, Blue, 100/cs
- 1510516 Tissue/Poly/Tissue, Mauve, 100/cs



1510101



1200696

STARLINE PROFESSIONAL TOWELS

For washing, draping, and lining. Quality 3-ply tissue construction.

- 1510101 3 Ply Tissue, White, 13" x 18", 500/cs

STARLINE TOWELS/DRAPE SHEETS

Sterile. White. Tissue/poly/tissue. 18" x 26".

- 1200696 Non-fenestrated, Dispenser Packed, 50/bx, 6 bx/cs
- 1200697 Towel with 3" Round Fenestration, Dispenser Packed, 50/bx, 6 bx/cs



STARLINE 18" ROUND HAMPER STAND

Made of chrome-plated steel with satin finish on the lid. The foot-pedal mechanism is activated by a spring for easy, hands-free operation. The M-shaped base design makes this hamper very stable and allows the four ball-bearing swivel casters to roll easily over different floor surfaces.

- 11353334 Hamper Stand, 18" Round



STARLINE STEP STOOL

9" high single step stool is ideal for examination rooms, x-ray, and other areas where sturdy support is required. Stool legs are constructed of 18 gauge tubular steel with chrome plated finish. Topped with a skid resistant mat.

- 11352002 Step Stool, 2/ctn, Same as #11200-2
- 11350220 Step Stool w/handrail, Same as #11220





STARLINE SCREW ADJUSTABLE REVOLVING STOOLS

Features 4" thick polyfoam cushions upholstered in durable vinyl for long lasting use. 14" cushion diameter. 22" diameter aluminum base with solid steel, machine thread screw for height adjustments of 19"-27". Dual wheel casters. 40 standard colors available, plus a variety of special order colors.

- 11350501 4-Leg Stool
- 11350511 4-Leg Stool, w/round footring
- 11350521 4-Leg Stool, w/square footring

STARLINE THREADLESS SCREW ADJUSTABLE STOOL

Thread height adjustment. 15" diameter. 4" thick poly-foam seat cushion. 21" diameter black composite base.

- 11350214 5-Leg Stool



STARLINE PNEUMATIC STOOL

Features a 5-leg, die brushed aluminum 22" diameter base. The base has a satin finish top with complementary black sides and black/chrome hooded casters. Equipped with a smooth operating air cylinder lift mechanism, operated by a convenient semi-ring under seat. Seat cushion is 4" thick, 16" diameter. 40 standard colors available, plus a variety of special order colors.

- 11350001 5-Leg Pneumatic Stool
- 11350002 5-Leg Pneumatic Stool w/backrest

STARLINE VALUE PLUS PNEUMATIC STOOL

Pneumatic height adjustment of 17 1/2" - 22 1/2". Features 5-leg, 21" diameter composite base. Poly foam seat cushion is 4" thick, 15" diameter. Available in upholstery colors to match any exam room.

- 11350800 5-Leg Pneumatic Stool



11353601



11353001



11350403

STARLINE 5-LEG IV STAND

Epoxy coated steel base with twin wheel casters for ease of transport. Posts are constructed of 1" diameter chrome plated steel tubing. Extensions are made with 7/8" OD chrome plated steel tubing and are secured with a sturdy frictionknob. No loss knob. Height adjustment is 52 1/2" to 93 3/4".

- 11353501 IV Stand, 2-Rams Horn Hooks
- 11353601 IV Stand, 4-Rams Horn Hooks

STARLINE 4-LEG IV STAND

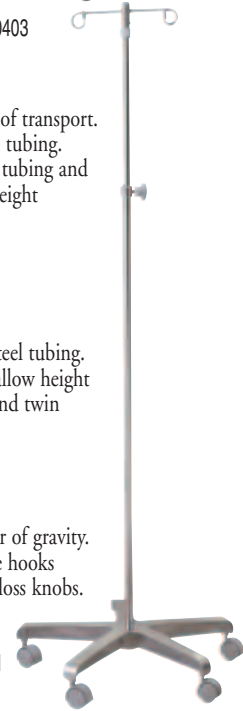
Posts and extensions are constructed of chrome plated steel tubing. Extensions are secured with a sturdy friction knob and allow height adjustment of 47" to 84 1/2". Epoxy coated steel base and twin wheel casters provide ease of transport. No loss knob.

- 11353001 IV Stand, 2-Rams Horn Hooks

STARLINE I.V. STAND

Heavy bar steel base to achieve the lowest possible center of gravity. Base is epoxy coated to resist corrosion. Ram's horn type hooks prevent accidental spilling. Height adjusts 52"-94".

- 11350403 Two-Hook Model Stand



11353501



11353460



11351001

STARLINE MAYO INSTRUMENT STANDS

Available in two designs, both of durable heavy gauge chrome-plated steel tubing. Screw lock adjustment provides secure lock at desired height. Large stainless steel instrument tray is removable for easy cleaning.

- 11353460 U-Shaped Base, 1 Pole Support
- 11351001 California-Style Base, 2 Pole Support



STARLINE GOOSENECK EXAM LAMP

Durable chrome finish. Adjustable height 50"-74". 12" flexible gooseneck arm allows easy, one-handed 360 degree adjustment. Uses one 10-40 incandescent watt bulb (not included).

- 11350500 Adjustable 50"-74" Exam Lamp

STARLINE STEP ON METAL WASTE CAN

Steel outer can and lid provide secure waste disposal. Features removable plastic inner liners for easy cleaning. Step-on foot pedal opens lid hygienically. White enamel finish complements any office decor.
11350266 32 Qt Waste Can

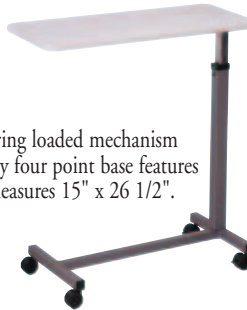


STARLINE MULTIPURPOSE CART

Suited for almost any task. Carries two 6" wire baskets or one 12" basket (not included). Folds flat for storage. Chrome plated steel frame. No assembly required
11353400 Cart
11353020 6" Basket, 2/ctn

STARLINE OVERBED TABLE

Table features gray laminate top with vinyl trim. Spring loaded mechanism allows quick height adjustment from 28"-43". Sturdy four point base features dual wheel nylon casters for easy positioning. Top measures 15" x 26 1/2".
11350600 Gray Laminate Bed Table



STARLINE UTILITY CART

Plastic, all purpose and sturdy to accommodate almost all sensitive equipment and disposable supplies. 200 lb capacity. Three ABS plastic shelves and 3" swivel casters.
11353530 27 1/4" X 17" Shelf Size, 35 1/2"H, 11" Between Cart Shelves #65350

STARLINE INSTRUMENT LUBRICANT

Non-silicone and non-toxic solution that eases stiffness. Steam permeable and water soluble. Prevents electrolysis on points and edges. Helps prevent rust.
T2S Instrument Lubricant, Gal, 4/cs

STARLINE ENZYMATIC CLEANING SOLUTION

Disintegrates blood products. Neutral pH, bacteriostatic, double enzyme. Non-corrosive, safe for scopes. Cleans hard to reach surfaces. Can be used in ultrasonic cleaners.
B9S Enzymatic Cleaner, Gallon, 4/cs

STARLINE HIGH SUDS INSTRUMENT DETERGENT

Concentrated powder and liquid are biodegradable with neutral pH. Contain rust inhibitors and rinsing agents. Hemolytic to remove blood.
B2S High Suds Liquid For Manual Cleaning, Gallon, 4/cs
B3S High Suds Powder, 5 lb Tub, 6/cs

STARLINE LOW SUDS INSTRUMENT DETERGENT

Biodegradable with neutral pH. Hemolytic to remove blood. Contains rust inhibitor and rinsing agent. Highly concentrated.
B1S Low Suds Liquid For Ultrasonic Cleaners, Gallon, 4/cs

STARZYMATIC 2000 DUAL ENZYMATIC DETERGENT

Low foaming for cleaning instruments. Fast and effective against complex soils. Effectively attacks both protein and starch based soils. Reduces unpleasant odors with a built-in odor suppressant. Ultrasonic solution. Concentrated. Neutral pH formula.
12282000 StarZymatic 2000, 1 Gallon w/1oz pump, 4/cs



STARZYMATIC SINGLE ENZYMATIC DETERGENT

Low foaming for cleaning instruments. Designed to attack the most common protein based instrument soils. pH neutral and non-corrosive. Ultrasonic solution. Concentrated.
2282001 StarZymatic, 1 Gallon w/1oz pump, 4/cs



STARCIDE® S, STARCIDE® NS AND STARCIDE® PLUS

StarCIDE S, StarCIDE NS and StarCIDE PLUS alkaline glutaraldehyde solutions are liquid chemical sterilants and/or high-level disinfectants of immersible medical and dental instruments. All StarCIDE solutions are approved for use at "true" room temperature 68°F (20°C). StarCIDE NS contains no surfactants and is reusable for up to 14 days. StarCIDE S and StarCIDE PLUS contain surfactants and may be reused for up to 28 days. StarCIDE S and StarCIDE NS contain 2.4% glutaraldehyde while StarCIDE PLUS contains 3.4% glutaraldehyde and is for use in areas where inadvertent dilution may occur.

- 122802250 StarCIDE® NS, Gallon, 4/cs
- 122802785 StarCIDE® Plus, Gallon, 4/cs
- 122802750 StarCIDE® S, Gallon, 4/cs

STARLINE VAGINAL SPECULA

Recommended for routine gynecological exams. Disposable. Allows the examination of the vaginal mucosa at 360° angle without rotation. Wide range of adjustability. Ease of operation and manipulation with one hand. Self-holding in various opening positions. Made from hard, clear and non-toxic plastic resin of high strength.



- 16108309 Small, 10/bg, 10 bg/cs
- 16108310 Medium, 10/bg, 10 bg/cs
- 16108311 Large, 10/bg, 10 bg/cs

STARLINE COVER GLASS

Superior corrosion resistance. Uniform flatness and thinness with no warping. Crush-resistant plastic box has semi-soft foam interior for lint free protection.

- Packaging: 1 ounce per plastic carton, 10 cartons/box
- 150612222 22 mm x 22 mm, Thickness No. 1 (0.13 to 0.17 mm)
- 150622222 22 mm x 22 mm, Thickness No. 2 (0.17 to 0.25 mm)

STARLINE MICROSCOPE SLIDES

Made from finest sheet glass to assure smooth, flat surface. No striations, bubbles or ripples. Ground, smooth edges. Pre-cleaned and ready to use. 1.00 mm thick. 3" x 1".

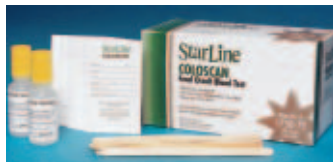
- 1506420 Plain, Pkg 10 gross/cs
- 1506421 Frosted 2 Sides, Pkg 10 gross/cs



175071



175079



175072



175082

STARLINE FECAL OCCULT BLOOD TESTS

Guaiac paper test for fecal occult blood. Available in triple and single slide configurations, as well as tape form for in-clinic digital exams. All tests have positive and negative quality assurance monitors to ensure proper test performance.

- 175071 ColoScan Office Pack, 100 Triple Unit Slides, 6 x 15 mL Developers, Applicators, Envelopes, 100/bx
- 175072 Coloscan Lab Pack, 100 Single Unit Slides, 2 x 15 mL Developers, Applicators, 100/bx
- 175082 ColoScan Lab Pack, 34 Triple Unit Slides, 2 x 15 mL Developers, Applicators, 34/bx
- 175079 Coloscan Tape, 2 x 100 Test Tapes, 2 x 15 mL Developers, 200 tests/bx



175085



175086

STARLINE COLOSCAN ES (EXTRA SENSITIVE)

Guaiac paper test for fecal occult blood. Available in triple and single slide configurations. All tests have positive and negative quality assurance monitors to ensure proper test performance. Same type of test as the original Coloscan except extra sensitive for better detection.

- 175085 ES ColoScan Take Home Pack w/collection tissues, 80 ES Triple Unit Slides, 6 x 15 ml ES Developer, 240 Specimen Applicators
- 175086 ES ColoScan Lab Pack, 100 ES Single Units, 2 x 15 ml Developer, 100 Specimen Applicators



59135



59127



59128

STARLINE NIPPERS

Manufactured to German standards with exceptional value. Lifetime guarantee against defects in material or workmanship assures years of serviceability from each instrument. Selection of the most popular patterns of surgical instruments.

Cuticle

- 59135 4" Convex 5mm SS

Nail

- 59127 5 1/2" Concave SS
- 59128 5 1/2" Straight SS

Tissue

- 59136 4 1/2" 10mm SS



59136



STARLINE CAST SPREADER

Manufactured to German standards with exceptional value. Lifetime guarantee against defects in material or workmanship assures years of serviceability from each instrument. Selection of the most popular patterns of surgical instruments.

- 59114 Cast Spreader



STARLINE KEVORKIAN-YOUNGUE CURETTE

Manufactured to German standards with exceptional value. Lifetime guarantee against defects in material or workmanship assures years of serviceability from each instrument. Selection of the most popular patterns of surgical instruments.

- 59122 Kevorkian-Youngue Curette w/basket
- 59123 Kevorkian-Youngue Curette w/o basket



59125



59124

STARLINE TISCHLER BIOPSY PUNCH

Manufactured to German standards with exceptional value. Lifetime guarantee against defects in material or workmanship assures years of serviceability from each instrument. Selection of the most popular patterns of surgical instruments.

- 59125 Baby-Tischler
- 59124 Tischler, 3x7mm



STARLINE FORCEPS

Manufactured to German standards with exceptional value. Lifetime guarantee against defects in material or workmanship assures years of serviceability from each instrument. Selection of the most popular patterns of surgical instruments.

Dressing

- 59054 4 1/2"
- 59055 5"
- 59013 5 1/2"
- 59056 6"
- 59075 9 1/2" Curved Serrated
- 59057 10"

Foerster

- 59027 9 1/2" Straight Serrated
- 59074 9 1/2" Straight Smooth
- 59075 9 1/2" Curved Serrated

Halsted Mosquito

- 59018 5" Curved
- 59017 5" Straight

Hartman Mosquito

- 59069 3 1/2" Curved
- 59068 3 1/2" Straight

Hartman-Noyes

- 59110 3 1/4" Serrated

Jansen Ear

- 59063 6 1/2"

Kelly

- 59020 5 1/2" Curved
- 59019 5 1/2" Straight

Kevorkian-Young Biopsy

- 59126 Kevorkian-Young Biopsy Forceps

Lucae Ear

- 59109 5 1/2"

Roch-Carmalt

- 59073 6 1/4" Curved
- 59072 6 1/4" Straight

Rochester-Pean

- 59024 6 1/4" Curved
- 59071 6 1/4" Straight

Schroeder-Braun Tenaculum

- 59032 9 3/4"

Semkin

- 59060 Tissue Forceps 5", 1x2 Teeth

Splinter

- 59064 3 1/2"
- 59065 4"
- 59066 4 1/2"

Tissue

- 59058 5", 1x2 Teeth
- 59014 5 1/2", 1x2 Teeth
- 59059 6", 1x2 Teeth

Virtus Splinter

- 59067 6"



59069



59110



59063



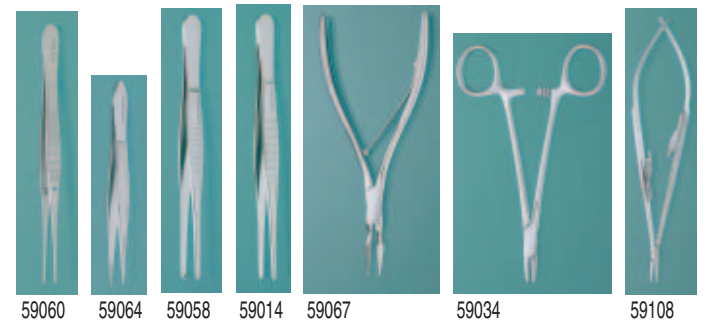
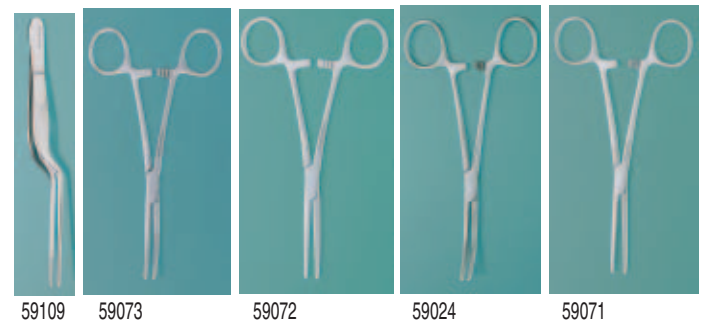
59020



59019



59126



59089



59035

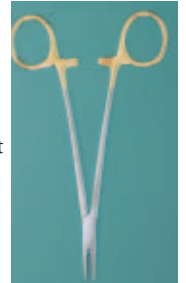


59036

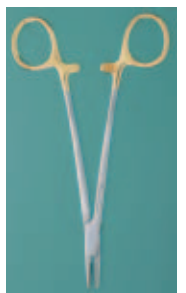
STARLINE NEEDLE HOLDERS

Manufactured to German standards with exceptional value. Lifetime guarantee against defects in material or workmanship assures years of serviceability from each instrument. Selection of the most popular patterns of surgical instruments.

- 59034 Baumgartner 5 1/2"
- 59108 Castroviejo Straight w/lock
- 59089 Crile-Wood 6"
- 59076 Derf 4 3/4"
- 59078 Halsey 5"
- 59035 Mayo-Hegar 5"
- 59036 Mayo-Hegar 6"
- 59085 Mayo-Hegar 7"
- 59087 Mayo-Hegar 8"
- 59079 Olsen-Hegar 4 3/4", Serrated Delicate
- 59080 Olsen-Hegar 5 1/2"
- 59081 Olsen-Hegar 6 1/2"
- 59082 TC Baumgartner 5 1/2"
- 59090 TC Crile-Wood 6", Serrated
- 59083 TC Mayo-Hegar 5"
- 59084 TC Mayo-Hegar 6"
- 59086 TC Mayo-Hegar 7"
- 59088 TC Mayo-Hegar 8"
- 59077 TC Webster 5"
- 59033 Webster 5"



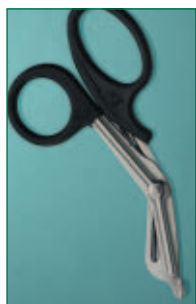
59090



59084



59090



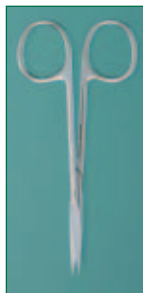
59053



59107



59050



59049



59001



59048



59029



59010



59009



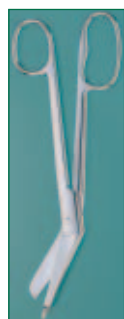
59051



59011



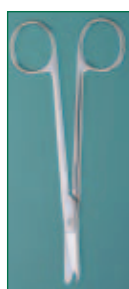
59012



59052



59030



59092



59004



59003



59006



59005



59007



59008



59047



59093



59045



59040



59044



59002

STARLINE SCISSORS

Manufactured to German standards with exceptional value. Lifetime guarantee against defects in material or workmanship assures years of serviceability from each instrument. Selection of the most popular patterns of surgical instruments.

- 59053 Bandage & Utility 7 1/2"
- 59107 Eye Suture 3 3/4" Curved
- 59050 Iris 4" Curved
- 59049 Iris 4" Straight
- 59010 Iris 4 1/2" Curved
- 59009 Iris 4 1/2" Straight
- 59051 Lister Bandage 4 1/2" SS
- 59011 Lister Bandage 5 1/2" SS
- 59012 Lister Bandage 7 1/4" SS
- 59052 Lister Bandage 8" Large Ring
- 59030 Littauer Stitch 4 1/2"
- 59092 Littauer Stitch 5 1/2"
- 59004 Mayo Scissors 5 1/2" Curved
- 59003 Mayo Scissors 5 1/2" Straight
- 59006 Mayo Scissors 6 3/4" Curved
- 59005 Mayo Scissors 6 3/4" Straight
- 59007 Metzenbaum 5 1/2" Curved
- 59046 Metzenbaum 5 1/2" Straight
- 59008 Metzenbaum 7" Curved
- 59047 Metzenbaum 7" Straight
- 59093 Stitch 4 1/2"
- 59091 Northbent Stitch 4 3/4"
- 59042 O.R. Scissors 4 1/2" Straight Sharp/Blunt
- 59040 O.R. Scissors 4 1/2" Straight Sharp/Sharp
- 59043 O.R. Scissors 5" Straight Sharp/Blunt
- 59041 O.R. Scissors 5" Straight Sharp/Sharp
- 59044 O.R. Scissors 5 1/2" Straight Blunt/Blunt
- 59002 O.R. Scissors 5 1/2" Straight Sharp/Blunt
- 59001 O.R. Scissors 5 1/2" Straight Sharp/Sharp
- 59045 O.R. Scissors 5 1/2" Curved Sharp/Blunt
- 59048 Ragnell 5" Curved Flat Tip
- 59029 Spencer Stitch 3 1/2"
- 59106 Stevens Tenot 4 1/8" Curved Blunt
- 59105 Stevens Tenot 4 1/8" Straight Blunt
- 59093 Stitch 4 1/2"
- 59094 Wire 4 3/4" Angled



STARLINE KNIFE HANDLES

Manufactured to German standards with exceptional value. Lifetime guarantee against defects in material or workmanship assures years of serviceability from each instrument. Selection of the most popular patterns of surgical instruments.

- 59038 #3
- 59039 #4



59025



59026

STARLINE BACKHAUS TOWEL CLAMP

Manufactured to German standards with exceptional value. Lifetime guarantee against defects in material or workmanship assures years of serviceability from each instrument. Selection of the most popular patterns of surgical instruments.

- 59025 3 1/2"
- 59026 5 1/4"



59016



59031



59028



59037

STARLINE SUTURE & TISSUE FORCEPS

Manufactured to German standards with exceptional value. Lifetime guarantee against defects in material or workmanship assures years of serviceability from each instrument. Selection of the most popular patterns of surgical instruments.

Adson

- 59062 Suture Forceps w/platform
- 59016 Tissue Forceps 4 3/4", 1x2 Teeth
- 59061 Tissue Forceps 4 3/4", 2x3 Teeth

Allis

- 59031 Tissue Forceps 6", 4x5 Teeth
- 59101 Tissue Forceps 6", 5x6 Teeth
- 59102 Tissue Forceps 7 1/4", 5x6 Teeth

Babcock

- 59104 Tissue Forceps 6 1/4"
- 59103 Tissue Forceps Baby Babcock 5 1/2"

Bozeman

- 59028 Forceps 10 1/2" Curved

Brown-Adson

- 59037 Forceps 4 3/4", 7x7 Teeth

Crile

- 59021 Forceps 5 1/2" Straight
- 59022 Forceps 5 1/2" Curved
- 59023 Forceps 6 1/4" Curved
- 59070 Forceps 6 1/4" Straight



59021



59022



59096



59095

STARLINE RETRACTORS

Manufactured to German standards with exceptional value. Lifetime guarantee against defects in material or workmanship assures years of serviceability from each instrument. Selection of the most popular patterns of surgical instruments.

- 59098 Gelpi Perineal 6 3/4"
- 59096 Senn 6 3/8" Blunt
- 59095 Senn 6 3/8" Sharp
- 59097 U.S. Army 8 1/2", 2/set
- 59100 Weitlaner 4" Blunt
- 59099 Weitlaner 4" Sharp



59131



59134

STARLINE NAIL SPLITTER

Manufactured to German standards with exceptional value. Lifetime guarantee against defects in material or workmanship assures years of serviceability from each instrument. Selection of the most popular patterns of surgical instruments.

- 59129 4" Straight SS
- 59130 4 1/2" Straight SS
- 59131 5" Straight SS
- 59132 Delicate Straight SS
- 59134 5" Eng Anvil Patt
- 59133 6" Heavy Straight SS



STARLINE ADSON DRESSING FORCEPS

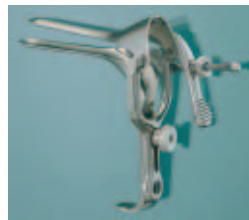
Manufactured to German standards with exceptional value. Lifetime guarantee against defects in material or workmanship assures years of serviceability from each instrument. Selection of the most popular patterns of surgical instruments.

- 59015 4 3/4"

STARLINE SIMS UTERINE SOUND

Manufactured to German standards with exceptional value. Lifetime guarantee against defects in material or workmanship assures years of serviceability from each instrument. Selection of the most popular patterns of surgical instruments.

- 59121 Sims Uterine Sound Silver-Plated



59120



59111

STARLINE SPECULA

Manufactured to German standards with exceptional value. Lifetime guarantee against defects in material or workmanship assures years of serviceability from each instrument. Selection of the most popular patterns of surgical instruments.

- 59115 Graves Vaginal Small
- 59117 Graves Vaginal Medium
- 59117 Graves Vaginal Large
- 59118 Pederson Vaginal Small
- 59119 Pederson Vaginal Medium
- 59120 Pederson Vaginal Large
- 59113 Vienna Nasal Small
- 59112 Vienna Nasal Medium
- 59111 Vienna Nasal Large



STARLINE FIRST AID KIT

Designed for the needs of any location that requires first aid supplies for approx. 25 people. Kit contains the finest in medical supplies. Contents assembled in a white metal cabinet with latch closure. Can be wall mounted. Contains: 1 box (100) 3/4" Sheer Strips, 1 box (10) Butterfly Wound Closures, 1 box (10) Flexitape 3/4" fabric bandage, 1 box (100) non-adherent pads 2" x 3", 2 eye pads, 4 cleansing towelettes, 1 instant cold pack, 2 ammonia inhalants, 1 pair latex gloves, 1 triangular bandage, 1 roll 1/2" waterproof tape, 1 stretch gauze bandage (1"), 1 stretch gauze bandage (2"), 1 first aid cream 7/8 oz, 1 pair steel scissors, 1 National Safety Council First Aid Guide, and 1 contents card.

10709025 First Aid Kit, 6/cs



STARLINE NON-ADHERENT LATEX FREE PADS

Will not stick to the wound site. Individually wrapped in a peel open package and highly absorbent. Dispenser box. Sterile. Latex free.

10707565 2" x 3", 100/bx, 12 bx/cs
10707575 3" x 4", 100/bx, 12 bx/cs



STARLINE SHEER LATEX FREE STRIPS

High quality sheer adhesive bandages stays right where you want it. Conform to body contours. Won't stick to the wound site. Sheer qualities let the air in and moisture out to promote healing. Easy to open wrapper. Handy fold out dispenser box. Sterile. Latex free.

10701303 Spots, 100/bx, 12 bx/cs
10701275 3/4" x 3" Strips, 100/bx, 12 bx/cs
10701290 1" x 3" Strips, 100/bx, 12 bx/cs



STARLINE FLEXIBLE LATEX FREE ADHESIVE BANDAGES

Heavyweight elastic fabric provides strong, hard-wearing protection for all minor punctures, cuts, and abrasions. Flexible weave permits bandage to stretch, conforms easily to irregularities, allows greater freedom of movement with far less painful pulling. Special bandage adhesive provides staying power, even on moist skin, but peels off easily. Individually sealed in sterile, easy release paper sleeves. This product is latex free.

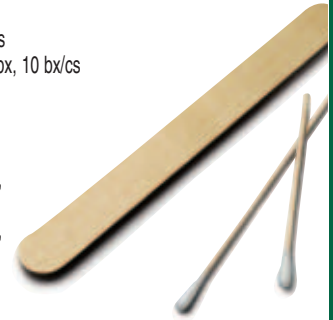
10701580 3/4" x 3", 100/bx, 12 bx/cs
10701595 1" x 3", 100/bx, 12 bx/cs
10701602 Knuckle, 100/bx, 12 bx/cs
10701607 Fingertip, 100/bx, 12 bx/cs
10701570 XL, 2" x 4 1/2", 50/bx, 24 bx/cs

STARLINE TONGUE DEPRESSORS

256500 5 1/2" Junior, 500/bx, 10 bx/cs
256520 6" Senior, 6" x 11/16", 500/bx, 10 bx/cs
256569 Sterile, 6" Senior Blade, 1/pk, 100 pk/bx, 10 bx/cs

STARLINE APPLICATORS

256559 Plain, 6" x 1/12", 1000/bx, 20 bx/cs
256561 Cotton-Tipped, 3" x 1/12", Wood Stick, 100/bg, 10 bg/bx, 10 bx/cs
256562 Cotton-Tipped, 6" x 1/12", Wood Stick, 100/bg, 10 bg/bx, 10 bx/cs
256568 Sterile, Cotton-Tipped, 6" x 1/12", Wood Stick, 2/pk, 100 pk/bx, 10 bx/cs



STARLINE ELASTIC BANDAGES - ECONOMY

Lightweight elastic support bandage for general use. High quality yarns reinforced with rubber are woven to provide balanced stretch and compression. Can be laundered, sterilized, and reused. Each bandage is individually packed in a snap-open plastic wrap with clips enclosed.

122562 2" x 4.5 yd, 50/cs
122563 3" x 4.5 yd, 50/cs
122564 4" x 4.5 yd, 50/cs
122566 6" x 4.5 yd, 50/cs

STARLINE ELASTIC BANDAGES - PREMIUM

Comprised of a heavier gauge rubber which is more durable and softer. Stretches to 180". Has increased compression.

207369 2", 10/bx, 5 bx/cs
207376 3", 10/bx, 5 bx/cs
207377 4", 10/bx, 5 bx/cs
207378 6", 10/bx, 5 bx/cs

STARLINE CONFORMING GAUZE BANDAGES

Non sterile. Clings to itself and stretches to conform. 60% cotton for breathability, absorbency and comfort blended with 40% polyester for strength and flexibility. Low linting and highly absorbent, helps reduce lint from entering the wound. Ease of application - no need to tuck or twist. Used in the operating, emergency rooms, as well as surgical floors, orthopededics and dermatology. Used to secure dressings and excellent for general bandaging, secondary burn dressings. 4.1 yards stretched.

1295412 2", 12/bg, 8 bg/cs
1295413 3", 12/bg, 8 bg/cs
1295414 4", 12/bg, 8 bg/cs
1295416 6", 6/bg, 8 bg/cs

STARLINE BRAND NON-STERILE GAUZE SPONGES

Soft, fluffy gauze sponges are non-irritating, highly absorbent and economical. Sponges meet USP Type VII absorbent gauze specifications.

155222 2" x 2", 12-Ply, 200/bg, 40 bg/cs
155228 2" x 2", 8-Ply, 200/bg, 25 bg/cs
155332 3" x 3", 12-Ply, 200/bg, 20 bg/cs
155442 4" x 4", 12-Ply, 200/bg, 10 bg/cs
155448 4" x 4", 8-Ply, 200/bg, 20 bg/cs



STARLINE COTTON BALLS

Ideal for prepping nursery, first aid, doctor's offices, and general use. Made of high grade, bleached, absorbent cotton. Soft, compact, and uniform to size and weight. Will not come apart when saturated.

10705510 Medium Cotton Balls, 2M/bg, 2 bg/cs
10705530 Large Cotton Balls, 1M/bg, 2 bg/cs

STARLINE ALCOHOL PREP PADS

Prep pad impregnated with 70% USP Grade isopropyl alcohol. Used as a skin antiseptic. Packaged individually in a hermetically sealed foil pouch.
178002 Medium, 1 1/8" x 2 3/8", 200/bx, 10 bx/cs



STARLINE LANCETS

2290200 General Purpose, Blue, Standard Cannula 21g, 200/bx



STARLINE LATEX EXAM GLOVES

Soft & supple hand protection. Natural rubber latex effectively shields user from bloodborne pathogens and microbiologically transmitted diseases. Features a rolled bead cuff for faster donning, prevents unprotected exposure caused by roll down.

Non-Sterile

145002 Small, Size 5-6, 100/bx, 10 bx/cs
145000 Unisize, Size 6-8 1/2, 100/bx, 10 bx/cs
145001 Large, Size 9+, 100/bx, 10 bx/cs

Sterile Singles

145010 Unisize, Size 6-8 1/2, 100/box, 8 box/case
145011 Large, Size 9+, 100/box, 8 box/case

Sterile Pairs

145020 Unisize, Size 6-8 1/2, 50 pair/box, 8 box/case
145021 Large, Size 9+, 50 pair/box, 8 box/case

STARLINE POWDER-FREE LATEX EXAM GLOVES

Our ambidextrous powder-free gloves are lightly textured to increase gripping ability without affecting sensitivity. These gloves work well in both wet and dry environments. They are accepted for FDA Low Protein Labeling and are talc-free to minimize powder related peritonitis, granuloma, adhesion and tissue trauma. They have a rolled cuff. Every glove is 100% individually air tested with compressed air twice - once before and once after chlorination process to insure 100% AQL against pinhole and other physical defects for greater product and worker protection. Non-sterile.

145054 X-Small (5-5 1/2), 100/bx, 10 bx/cs
145052 Small (6-6 1/2), 100/bx, 10 bx/cs
145050 Medium (7-7 1/2), 100/bx, 10 bx/cs
145051 Large (8-8 1/2), 100/bx, 10 bx/cs
145053 X-Large (9-9 1/2), 100/bx, 10 bx/cs

STARTEX BRAND POWDERED LATEX EXAM GLOVES

Ultra light powder. Low chemical residuals. pH balanced. 9" length with beaded cuff.

Packaged: 100/box, 10 boxes/case.

145034 X-Small
145032 Small
145030 Medium
145031 Large
145033 X-Large



STARLINE SYNTHETIC VINYL EXAM GLOVES

Lightly powdered "satin stretch" synthetic gloves. Manufactured in a strict quality control environment to exceed the ASTM and FDA standards for watertight testing and pinholes. Made of a unique formulation for a softer, more tactile feel. Non-sterile. Medical grade.

129502 Small, 6-6 1/2, 100/bx, 10 bx/cs
129504 Medium, 7-7 1/2, 100/bx, 10 bx/cs
129506 Large, 8-8 1/2, 100/bx, 10 bx/cs
129508 X-Large, 100/bx, 10 bx/cs

STARLINE SYNTHETIC VINYL POWER-FREE EXAM GLOVES

145062 Small, 6-6 1/2, 100/bx, 10 bx/cs
145060 Medium, 7-7 1/2, 100/bx, 10 bx/cs
145061 Large, 8-8 1/2, 100/bx, 10 bx/cs
145063 X-Large, 9 and Larger, 100/bx, 10 bx/cs



NITRILE EXAM GLOVES

N357001 Small
N357002 Medium
N357003 Large
N357004 X-Large



ALUMINUM CRUTCHES

Comfortable rounded arm rests, molded hand grips in non-turn grooves and adjusts in 1" increments. Large Pos-o-grip tips and anodized aluminum tubing.

NP9200-A Adult Crutches, 5ft 2" - 5ft 10", 8 pr/cs
NP9200-C Child Crutches, 4ft 2" - 4ft 8", 8 pr/cs
NP9200-T Tall Adult Crutches, 5ft 10" - 6ft 6", 8 pr/cs
NP9200-Y Youth Crutches, 4ft 6" - 5ft 2", 8 pr/cs



NON-STERILE STOCKINETTE

Used as wrapping for fractures where single layers conform to shape of limb or body-elasticity allows for swelling without discomfort. Dressing for vein ligations, plastic surgery procedures and with burn dressings. Used as a component of orthopedic appliances.

Cotton, 25 Yards

N0781220 2"
N0781320 3"
N0781420 4"
N0781620 6"

Synthetic, 25 Yards

N0786212 2"
N0786312 3"
N0786412 4"
N0786612 6"



HEAVY DUTY WHEELCHAIRS

Features superior durability, rollability and streamlined looks. It is designed for the active individual who needs the strength of a reinforced heavy-duty frame. Meets RESNA standards for manual wheelchairs in product performance. Heavy-duty inner liners keep seat and back from stretching. Features swingaway adult frame, 8" solid casters, 24" DTM rear wheels, chrome handrim, blue vinyl upholstery, padded upholstered armrests and double embossed upholstery. 350 lbs weight capacity. Three-year warranty. Front riggings sold separately (N50048 or N50049).

- N50027 22" Wide Wheelchair w/full removable arm
- N50028 22" Wide Wheelchair w/desk removable arm



HEMI WHEELCHAIRS

A lower seat to floor height of 17 1/2". Meets RESNA standards for manual wheelchairs in product performance. Low maintenance, dual sealed precision bearings. Flame retardant upholstery is mildew and bacteria resistant. 250 lbs weight capacity. Features swingaway adult frame, 8" solid rubber casters, 24" DTM rear wheels, chrome handrim, lightweight blue vinyl upholstery, padded upholstered arms, carry pocket and double embossed upholstery. Three-year warranty. Front riggings sold separately (N50050 or N50052).

- N50023 16" Wide Wheelchair w/full removable arm
- N50024 18" Wide Wheelchair w/full removable arm
- N50025 16" Wide Wheelchair w/desk removable arm
- N50026 18" Wide Wheelchair w/desk removable arm



LIGHTWEIGHT WHEELCHAIRS

The perfect wheelchair for both short and long term use. This versatile, lightweight frame meets RESNA standards for manual wheelchairs in product performance. Low maintenance, dual sealed precision bearings. Urethane upholstery is mildew and bacteria resistant. 250 lbs weight capacity. Features swingaway adult frame, 8" solid rubber casters, 24" DTM rear wheels, chrome handrim, lightweight black vinyl upholstery, padded upholstered arms and double embossed upholstery. Three-year warranty. Front riggings sold separately (N50050 or N50052).

- N50019 16" Wide Wheelchair w/full removable arm
- N50020 18" Wide Wheelchair w/full removable arm
- N50021 16" Wide Wheelchair w/desk removable arm
- N50022 18" Wide Wheelchair w/desk removable arm



STANDARD WHEELCHAIRS

The perfect combination of both quality and economy. Meets RESNA standards for manual wheelchairs in product performance. Low maintenance, dual sealed precision bearings. Heavy-duty inner liners keep seat and back from stretching. 16-gauge crossbraces add strength and durability. 250 lbs weight capacity. Features 8" solid rubber casters, 24" DTM rear wheels, chrome handrim, blue vinyl upholstery, padded upholstered arms, carry pocket and double embossed upholstery. Three-year warranty. Front riggings sold separately (N50050 or N50052).

- N50009 20" Wide Wheelchair w/swingaway adult frame & full removable arm
- N50010 20" Wide Wheelchair w/swingaway adult frame & desk removable arm
- N50001 16" Wide Wheelchair w/fixed frame, full permanent arm & aluminum footplates
- N50002 18" Wide Wheelchair w/fixed frame, full permanent arm & aluminum footplates
- N50003 16" Wide Wheelchair w/swingaway adult frame & full permanent arms
- N50004 18" Wide Wheelchair w/swingaway adult frame & full permanent arms
- N50005 16" Wide Wheelchair w/swingaway adult frame & full removable arms
- N50006 18" Wide Wheelchair w/swingaway adult frame & full removable arms
- N50007 16" Wide Wheelchair w/swingaway adult frame & desk removable arms
- N50008 18" Wide Wheelchair w/swingaway adult frame & desk removable arms



TRANSPORT WHEELCHAIRS

Designed for safe and efficient patient transport. Meets RESNA standards for manual wheelchairs in product performance. Low maintenance, dual sealed precision bearings. Flame-retardant upholstery resists mildew and bacteria. Fold-down or fixed-back option makes storage convenient. 8" solid casters. 250 lbs weight capacity. Features swingaway adult frame, blue vinyl upholstery, padded upholstered arms, carry pocket and double embossed upholstery. Three-year warranty.

- N50011 16" Wide Wheelchair w/full permanent arms
- N50012 18" Wide Wheelchair w/full permanent arms
- N50013 16" Wide Wheelchair w/full removable arms
- N50014 18" Wide Wheelchair w/full removable arms
- N50015 16" Wide Wheelchair w/desk removable arms
- N50016 18" Wide Wheelchair w/desk removable arms



WHEELCHAIR ACCESSORIES

- N50052 Elevating Legrests w/aluminum footplate & padded calf pads w/blue upholstery & hemi spacing (For hemi chairs)
- N50050 Footrests w/aluminum footplate (For lightweight & hemi chairs)
- N50051 Elevating Legrests w/aluminum footplate & padded calf pads w/black upholstery & hemi spacing (For lightweight chairs)

For standard, heavy duty & transport chairs

- N50048 Footrests w/aluminum footplate
- N50049 Legrests w/aluminum footplate padded calf pads



ADULT WIPES

- N90001 Flip Top Foil Pack Adult Wipes, 9" x 13", 64/pk, 8 pk/cs
- N90002 Easy Open Tub Adult Wipes, 9" x 13", 64/tub, 8 tub/cs



BATHING SYSTEM

Premium pre-moistened needle punch cleansing and bathing washcloths with aloe. Hypoallergenic, alcohol free, latex free. Soft to the skin, accordion folded for easy dispensing. Mild scent.

- N90003 Bathing System Needle Punch Material, 8 1/2" x 8", 8/pk, 24 pk/cs



STERILE GAUZE SPONGES

Ideal for all sterile wound care procedures. Manufactured of either 12 ply or 8 ply 100% cotton gauze. Finished and folded edges eliminate linting, fraying, and shredding. Peel open package for optimal sterile presentation.

- 1s**
 N157002 2" x 2", 12 Ply
 N157003 3" x 3", 12 Ply
 N157004 4" x 4", 12 Ply
- 2s**
 N157022 2" x 2", 8 Ply
 N157023 3" x 3", 12 Ply
 N157024 4" x 4", 8 Ply
 N157025 4" x 4", 12 Ply



STERILIZATION TUBING

- N01102 2" x 100 ft, 16 r/cs
 N01103 3" x 100 ft, 8 r/cs
 N01104 4" x 100 ft, 16 r/cs
 N01106 6" x 100 ft, 8 r/cs
 N01108 8" x 100 ft, 4 r/cs
 N01110 10" x 100 ft, 4 r/cs



SELF-SEAL STERILIZATION POUCHES

- N012790 2.75" x 9", 200/bx, 6 bx/cs
 N013554 3.5" x 5.25", 200/bx, 6 bx/cs
 N013590 3.5" x 9", 200/bx, 6 bx/cs
 N015015 5" x 15", 200/bx, 6 bx/cs
 N015410 5.25" x 10", 200/bx, 6 bx/cs
 N017513 7.5" x 13", 200/bx, 6 bx/cs
 N018024 8" x 24", 200/ctn
 N011016 10" x 16", 200/ctn
 N013522 Cassette Pouch, 3.5" x 22.5", 200/ctn
 N011217 Cassette Pouch, 12" x 17", 200/ctn
 N011318 Cassette Pouch, 13" x 18", 200/ctn



CONFORMING PASTE BANDAGE

- N0700001 3" x 10 yds., 12 pieces / 12 Case
 N0700002 4" x 10 yds., 12 pieces / 12 Case

Ask us about these fine StarLine Products:

- Synthetic Vinyl Gloves
- Synthetic Powder-Free Vinyl Gloves
- Latex Gloves
- Powder-Free Latex Gloves
- StarTex® Latex Gloves
- Nurse Scopes
- Pediatric Stethoscopes
- Sprague Rappaport Scopes
- Finger Tip & Knuckle Bandages
- Elastic Adhesive Bandages
- Alcohol Prep Pads
- Cotton Tipped Applicators & Cotton Balls
- Tongue Depressors
- Microscope Cover Glass & Slides
- Examination Table Paper
- Patient Exam Capes & Gowns
- Drape Sheets
- Electronic Thermometers
- Probe Covers
- Disposable Vaginal Specula
- First Aid Kits
- Conforming Gauze Bandages
- Gauze Sponges
- Sterile Gauze Pads
- Orthopedic Products
- Knee Immobilizers
- Elbow Protectors
- Surgical Instruments
- StarCide® Disinfecting / Sterilizing Solutions
- ColoScan® Occult Blood Tests